

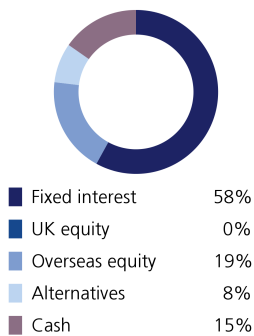
Sustainable Model Portfolio Service

In partnership with LGT Wealth Management

September 2023

EPIM Sustainable Defensive

Asset allocation



Top 10 holdings

| | |
|---|--------|
| ICS Sterling Liquidity | 10.00% |
| Vontobel Sustainable Short Term Bond | 9.50% |
| Trojan Ethical | 7.80% |
| Brown Advisory Global Sustainable Total | 6.80% |
| Vanguard US Govt Bond Index | 5.70% |
| Rathbone Ethical Bond | 5.50% |
| L&G Global Inflation Linked | 5.40% |
| Threadneedle UK Social Bond | 4.90% |
| CG Dollar | 4.60% |
| Threadneedle European Social Bond | 3.60% |

Portfolio information

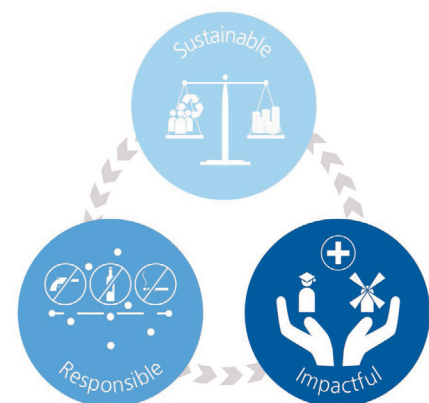
| | |
|--------------------------|-------------|
| Launch date | 1 June 2020 |
| Minimum cash holding | 2% |
| Annual management charge | 0.3% |
| Total Cost of Investment | 0.47% |

Portfolio Objectives

The primary objective of this portfolio is to preserve capital. The portfolio is diversified across a range of asset classes but with a low overall allocation to funds investing in equities (expected to be no greater than 40%) and other risk assets. Target Volatility: 2%-4.75%

Sustainable philosophy

The ultimate goal of the portfolio is to support more inclusive social and economic development and more sustainable environmental and business practices, whilst generating strong and consistent investment returns. The portfolio will aim to achieve this by investing in a diversified range of funds which include themes such as renewable energy, financial inclusion, education, social housing, climate change action, sustainable waste management and renewable material production.



Monthly investment update

The US stock market had its worst month of the year, with a September selloff erasing some of the gains from the prior seven months. Concerns have arisen that the Federal Reserve (Fed) will maintain high interest rates despite some economic weakness. The Fed's policymakers left the benchmark interest rate unchanged in September, signalling a "higher for longer" strategy to combat inflation while the economy remains strong and investors are adjusting to this outlook.

Despite uncertainty, fixed income assets have become more attractive due to rising Treasury yields, potentially luring investors away from stocks. There is also optimism for the market, especially in sectors like communication services, consumer discretionary, technology and industrials – more will be revealed as Q3 earnings begin.

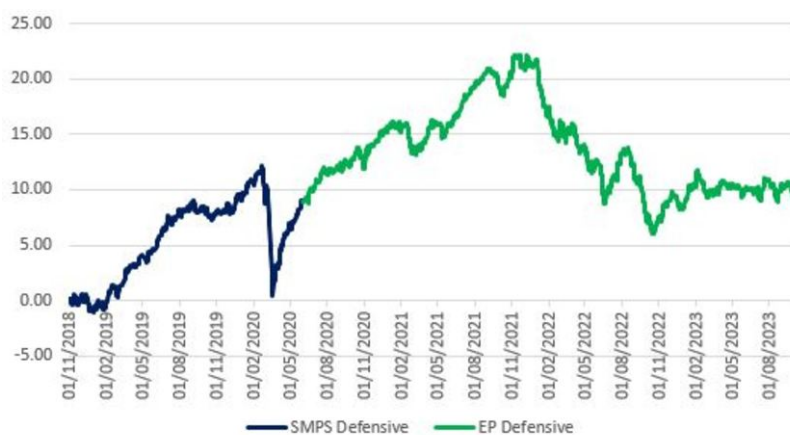
During periods of market decline and prevailing apprehension, it may prove challenging to resist the urge to liquidate investments, hoping to reinvest when market sentiment becomes more favourable – an attempt to 'time the market'. However, this approach comes with the risk of potentially forgoing some of the most prosperous days of market growth, which could significantly undermine long-term investment returns. Maintaining a long-term outlook is imperative during short-term uncertainty.

Powered by



**Wealth
Management**

Performance



Source: Morningstar

As at end of September 2023

| | |
|---------------------------|---------------|
| 1 month | -0.81% |
| 3 month | -0.32% |
| 6 month | -0.47% |
| 1 year | 2.66% |
| 3 year | -2.29% |
| | Target |
| Volatility | 2 to 4.75% |
| Return | 3 to 4.5% |
| Potential drawdown | -5.0% |
| | Yield |
| Assumed yield | 2.09% |
| Dividend | 27% |
| Savings | 73% |

Where targets are given, these are for indication purposes only; the actual figures achieved could be more or less than the ranges given. Source: Morningstar. Net of underlying fund costs, gross of all other charges. Source: Figaro. Fixed income considered saving income, all other asset classes (bar cash) considered dividend income.

Important information

The performance of actual portfolios linked to this Model Portfolio may differ from the performance of the Model Portfolio shown herein due to certain funds contained in the Model Portfolios not being made available for investment into actual portfolios by some investment platforms, the variation in timing of the initial investment or rebalancing differences resulting from minimum transaction size limits on the investment platform.

The Model Portfolio Service is not a financial instrument. The portfolio will consist of financial instruments, which when considered together as the Model Portfolio Service have a target market consistent with the needs of retail clients. This publication is marketing material. It is for information purposes only. The information presented herein is for illustrative purposes only and does not provide sufficient information on which to make an informed investment decision. This document is not intended and should not be construed as an offer, solicitation or recommendation to buy or sell any specific investments or participate in any investment (or other) strategy. It is recommended that potential investors should seek advice concerning the suitability of any investment from their Financial Adviser. Potential investors should be aware that past performance is not an indication of future performance and the value of investments and the income derived from them may fluctuate and they may not receive back the amount they originally invested. The tax treatment of investments depends on each investor's individual circumstances and is subject to changes in tax legislation. The Ongoing Charge Figure is variable and is for example purposes only. The information in this factsheet is for private circulation only and though it is believed to be correct it cannot be guaranteed. No representation or warranty (express or otherwise) is given as to the accuracy or completeness of the information contained in this factsheet and LGT Wealth Management UK LLP ("LGT Wealth Management") and its partners and employees accept no liability for the consequences of your acting upon the information contained herein.

LGT Wealth Management UK LLP is a Limited Liability Partnership registered in England and Wales. Registration number OC329392. LGT Wealth Management is authorised and regulated by the Financial Conduct Authority and is a member of the London Stock Exchange.

Eden Park Investment Management Limited is authorised and regulated by the Financial Conduct Authority. A Registered in England number 10953727. Registered office: The Pavilions, Eden Park, Ham Green, Bristol, BS20 0DD.