

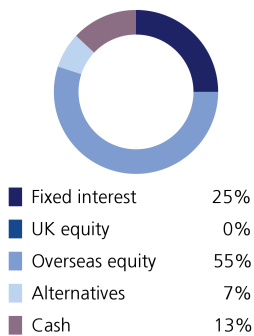
Sustainable Model Portfolio Service

In partnership with LGT Wealth Management

November 2022

EPIM Sustainable Balanced

Asset allocation



Top 10 holdings

ICS Sterling Liquidity	10.00%
Vontobel Sustainable Short Term Bond	8.70%
Trojan Ethical	7.10%
AB Sustainable US Thematic Equity	6.90%
Janus Henderson Global Sustainable Equity	6.50%
Morgan Stanley Global Sustain	6.30%
Lazard Global Sustainable Equity Fund	6.20%
Rathbone Ethical Bond	5.60%
Stewart Investors Asia Pacific Leaders	5.40%
Schroder Global Sustainable Value	4.90%

Portfolio information

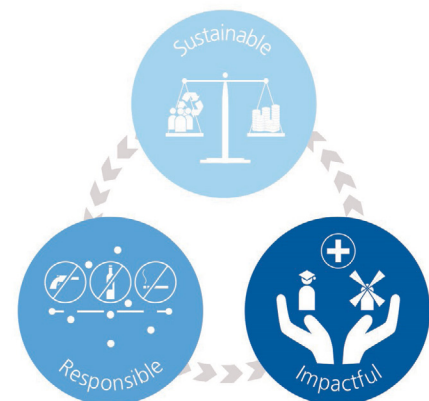
Launch date	1 June 2020
Minimum cash holding	2%
Annual management charge	0.3%
Total Cost of Investment	0.69%

Portfolio description

The primary objective of this portfolio is to achieve capital growth in excess of inflation. The portfolio is diversified across a range of asset classes, with a medium allocation to funds investing in equities (expected to be no greater than 75%) and other risk assets. Target Volatility: 5%-9%

Sustainable philosophy

The ultimate goal of the portfolio is to support more inclusive social and economic development and more sustainable environmental and business practices, whilst generating strong and consistent investment returns. The portfolio will aim to achieve this by investing in a diversified range of funds which include themes such as renewable energy, financial inclusion, education, social housing, climate change action, sustainable waste management and renewable material production.



Monthly investment update

In a speech at the end of the month, Chair of the US central bank, signalled a potential slowing pace of interest rate rises, helping to deliver a positive month for global equity markets whilst also signalling the continued volatility of global policy earlier throughout this year. Signs began to emerge of China relaxing the zero Covid strategy, including ramping up vaccinations for the elderly and instructing local officers to moderate covid restrictions. This news went a long way, as the equity market continued to rally off its mid-October lows, with the S&P 500 up 16.9% and EuroStoxx 50 up 21.8% from those levels*. Away from markets, November saw the 27th meeting of the United Nations Climate Change Conference which saw a breakthrough agreement on Loss and Damage for vulnerable countries hit by climate disasters and focuses on addressing the effects of climate change occurring today. Loss and Damage refer to the negative consequences of extreme weather on the physical and social infrastructure of poor countries, and the finance needed for rescue and reconstruction after climate-related disasters. At the time as this agreement for Loss and Damage was in discussion, Pakistan had been hit by record flooding that impacted 1 in 7 people in the country, with over 25% of the countries land mass underwater. The sustainable portfolios continue to provide exposure to themes such as climate change and directly target many of the essential solutions. We believe being exposed to these themes will contribute to positive socio-economic development, whilst generating consistent investment returns. The sustainable portfolios are well diversified with exposure to a number of different markets and sectors which should enable us to navigate the challenging macroeconomic conditions ahead.

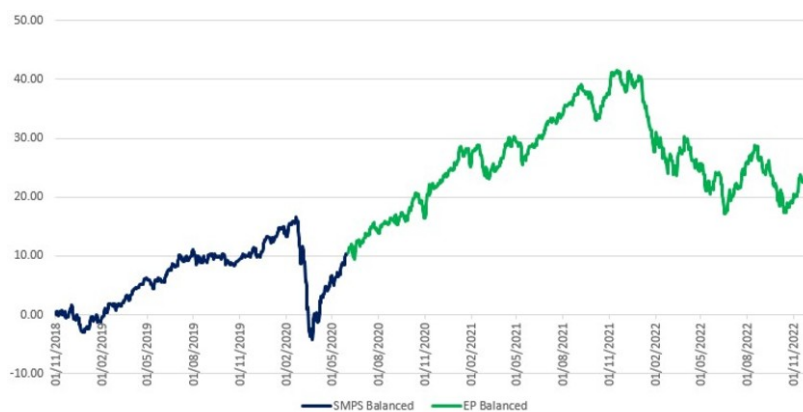
*Source: Bloomberg, data 13/10/22 to 30/11/22

Powered by



Wealth Management

Performance



Source: Morningstar

As at end of November 2022

1 month	2.47%
3 month	-1.58%
6 month	-0.92%
1 year	-11.48%
3 year	10.63%
	Target
Volatility	5 to 9%
Return	5.2 to 7.5%
Potential drawdown	-13.5%
	Yield
Assumed yield	1.25%
Dividend	62%
Savings	38%

Where targets are given, these are for indication purposes only; the actual figures achieved could be more or less than the ranges given. Source: Morningstar. Net of underlying fund costs, gross of all other charges. Source: Figaro. Fixed income considered saving income, all other asset classes (bar cash) considered dividend income.

Important information

The performance of actual portfolios linked to this Model Portfolio may differ from the performance of the Model Portfolio shown herein due to certain funds contained in the Model Portfolios not being made available for investment into actual portfolios by some investment platforms, the variation in timing of the initial investment or rebalancing differences resulting from minimum transaction size limits on the investment platform.

The Model Portfolio Service is not a financial instrument. The portfolio will consist of financial instruments, which when considered together as the Model Portfolio Service have a target market consistent with the needs of retail clients. This publication is marketing material. It is for information purposes only. The information presented herein is for illustrative purposes only and does not provide sufficient information on which to make an informed investment decision. This document is not intended and should not be construed as an offer, solicitation or recommendation to buy or sell any specific investments or participate in any investment (or other) strategy. It is recommended that potential investors should seek advice concerning the suitability of any investment from their Financial Adviser. Potential investors should be aware that past performance is not an indication of future performance and the value of investments and the income derived from them may fluctuate and they may not receive back the amount they originally invested. The tax treatment of investments depends on each investor's individual circumstances and is subject to changes in tax legislation. The Ongoing Charge Figure is variable and is for example purposes only. The information in this factsheet is for private circulation only and though it is believed to be correct it cannot be guaranteed. No representation or warranty (express or otherwise) is given as to the accuracy or completeness of the information contained in this factsheet and LGT Wealth Management UK LLP ("LGT Wealth Management") and its partners and employees accept no liability for the consequences of your acting upon the information contained herein.

LGT Wealth Management UK LLP is a Limited Liability Partnership registered in England and Wales. Registration number OC329392. LGT Wealth Management is authorised and regulated by the Financial Conduct Authority and is a member of the London Stock Exchange.

Eden Park Investment Management Limited is authorised and regulated by the Financial Conduct Authority. A Registered in England number 10953727. Registered office: The Pavilions, Eden Park, Ham Green, Bristol, BS20 0DD.