

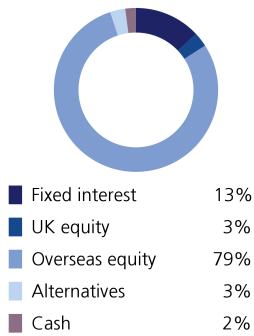
Sustainable Model Portfolio Service

In partnership with LGT Vestra

November 2021

EPIM Sustainable Growth

Asset allocation



Top 10 holdings

AB Sustainable US Thematic Equity	9.30%
Janus Henderson Global Sustainable Equity	9.00%
Lazard Global Sustainable Equity	8.70%
Stewart Investors Worldwide Sustainable	8.30%
Liontrust Sustainable Future Global Growth	8.10%
Morgan Stanley Global Sustain	7.00%
Ninety One Global Environment	5.50%
WHEB Sustainability	5.30%
Liontrust Sustainable Future Europe Growth	5.30%
Impax Asian Environmental Markets	4.60%

Portfolio information

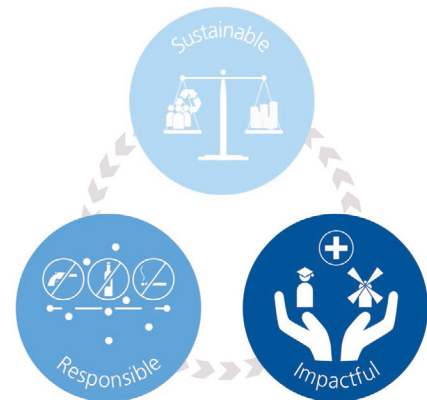
Launch date	1 June 2020
Minimum cash holding	2%
Annual management charge	0.3%
Total Cost of Investment	0.89%

Portfolio description

The primary objective of this portfolio is to achieve above average capital growth. The portfolio is diversified across a range of asset classes, with a medium-to-high allocation to funds investing in equities (expected to be no greater than 85%) and other risk assets. Target Volatility: 8%-13%

Sustainable philosophy

The ultimate goal of the portfolio is to support more inclusive social and economic development and more sustainable environmental and business practices, whilst generating strong and consistent investment returns. The portfolio will aim to achieve this by investing in a diversified range of funds which include themes such as renewable energy, financial inclusion, education, social housing, climate change action, sustainable waste management and renewable material production.



Monthly investment update

As we prepare ourselves for the transition into the new year, the world is faced with a new strain of Covid-19, the Omicron variant. The variant has shown early signs of being more virulent than others, albeit symptomatically less severe. The emergence of Omicron came at a time when many countries were already struggling with a surge in infections, that we have grown to associate with colder months of the year. Initial reactions saw risk assets hit hard, and government bond markets rallied as investors seek protection in safe haven assets in fear of renewed social restrictions. European countries were quick to act, with Austria's restrictions first to make headlines, followed by a number of European countries introducing targeted measures to restrict the spread of the virus.

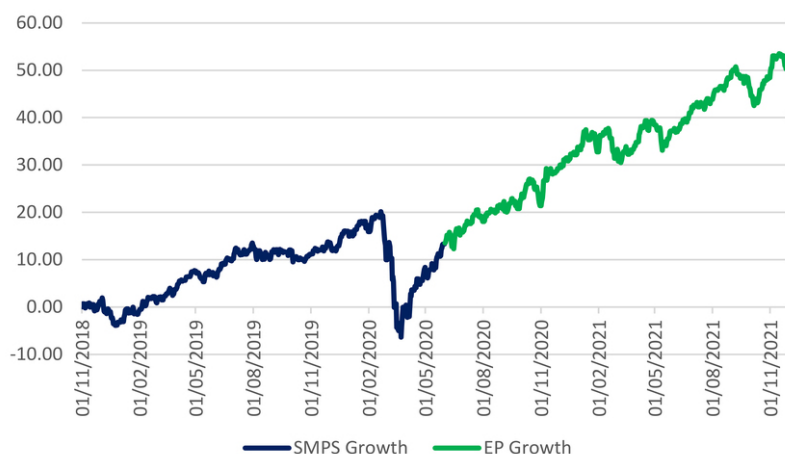
November also witnessed the 26th UN Climate Conference (COP). A number of the headline commitments made at COP may prove to be significant. Looking into the detail, over 100 countries, including Brazil, China and the USA committed to end deforestation by 2030, in a landmark agreement that encompasses 85% of the world's forests. More than 100 countries also signed up to limit methane emissions by 30% compared to 2020 levels but most surprising was the change in rhetoric from India, with commitments to reach net-zero by 2070. Following COP, the aggregate of commitments made aligns 89% of global GDP to net-zero, an increase of over 39% on 2020 figures.

The portfolio continues to be well positioned to navigate volatility, through favouring high quality companies exposed to structural drivers of growth over the medium term, benefiting from the extraordinary tailwinds that we are seeing gather momentum across the world.

Powered by



Performance



Source: Morningstar

As at end of November 2021

1 month	1.12%
3 month	0.29%
6 month	9.38%
1 year	15.98%
3 year	48.32%

	Target
Volatility	8 to 13%
Return	6 to 8%
Potential drawdown	-19%

	Yield
Assumed yield	0.36%
Dividend*	85%
Savings*	15%

Important information

This document is for information only and is for use of the recipient. It is not to be reproduced, copied or made available to others. This document is considered to be a general market and informational commentary and does not constitute any type of investment or other professional advice, it is not a personal recommendation and does not take into account the particular investment objectives, financial situations or needs (including tax) of individual clients. This document is not intended and should not be construed as an offer, solicitation or recommendation to buy or sell any specific investments or participate in any investment (or other) strategy. Investors should be aware that past performance is not an indication of future performance and the value of investments and the income derived from them may fluctuate and you may not receive back the amount you originally invested. Professional advice should always be sought.

Any information herein is given in good faith, but is subject to change without notice. No liability is accepted whatsoever by Eden Park Investment Management Ltd or LGT Vestra, employees and associated companies for any direct or consequential loss arising from this document. This document is not for distribution outside the European Economic Area.

Eden Park Investment Management Limited is authorised and regulated by the Financial Conduct Authority. A Registered in England number 10953727. Registered office: The Pavilions, Eden Park, Ham Green, Bristol, BS20 0DD.

LGT Vestra is a limited liability partnership registered in England & Wales. Registered Office: 14 Cornhill, London EC3V 3NR. Registration number OC 329392. LGT Vestra is authorised and regulated by the Financial Conduct Authority and is a member of the London Stock Exchange.