

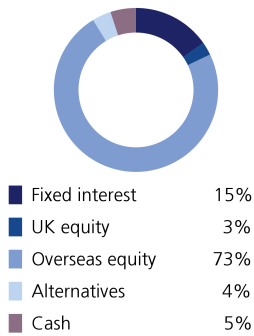
Sustainable Model Portfolio Service

In partnership with LGT Wealth Management

August 2022

EPIM Sustainable Growth

Asset allocation



Top 10 holdings

AB Sustainable US Thematic Equity	8.90%
Janus Henderson Global Sustainable Equity	7.80%
Lazard Global Sustainable Equity	7.70%
Morgan Stanley Global Sustain	6.90%
Stewart Investors Worldwide Sustainable	6.50%
Liontrust Sustainable Future Global Growth	6.10%
Stewart Investors Asia Pacific Leaders	6.00%
Ninety One Global Environment	5.80%
Schroder Global Sustainable Value	5.60%
Impax Asian Environmental Markets	5.00%

Portfolio information

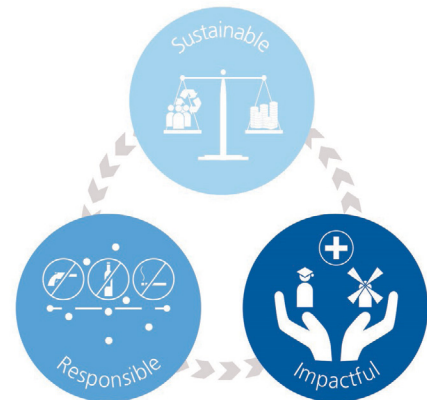
Launch date	1 June 2020
Minimum cash holding	2%
Annual management charge	0.3%
Total Cost of Investment	0.80%

Portfolio description

The primary objective of this portfolio is to achieve above average capital growth. The portfolio is diversified across a range of asset classes, with a medium-to-high allocation to funds investing in equities (expected to be no greater than 85%) and other risk assets. Target Volatility: 8%-13%

Sustainable philosophy

The ultimate goal of the portfolio is to support more inclusive social and economic development and more sustainable environmental and business practices, whilst generating strong and consistent investment returns. The portfolio will aim to achieve this by investing in a diversified range of funds which include themes such as renewable energy, financial inclusion, education, social housing, climate change action, sustainable waste management and renewable material production.



Monthly investment update

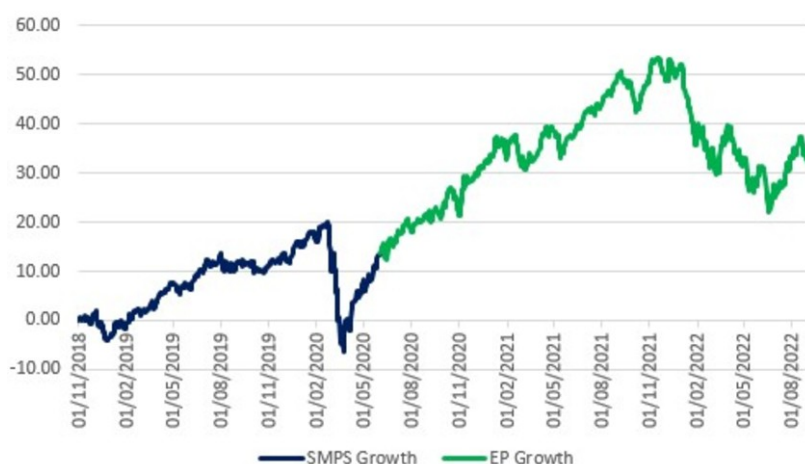
Markets have continued to flag uncertainty around economic conditions and the path for inflation and interest rates. After a strong market rally in July, markets have retreated once again in August, reflecting the fact that the US central bank is unlikely to begin easing financial conditions as early as the start of 2023, also referred to as a Fed pivot. Despite this, conditions in the US do not alarm us at this point and we are seeing a divergence emerge in outcomes for the US and the UK and Europe. The EU announced in August that their Natural Gas storage had reached their intended November target ahead of schedule and this was shortly followed by a closure of the Nord Stream 1 gas pipeline from Russia, highlighting the energy and thus inflationary risks here. Through 2022, our globally diversified approach has benefitted us as our Asia Pacific exposure has provided good downside protection and remaining selective has enabled us to avoid more speculative parts of the market which have been most heavily impacted. As summer rolls to an end in the UK, we have learnt some important lessons about our world and how prepared we are for a warmer world with more volatile weather patterns. Long has been our belief that rapid action to develop and enhance our environmental resilience is essential to avoid significant economic damage and the extreme weather we have seen this year has demonstrated both the need for greater resilience and the economic impacts of climate change. We expect the commitments from nations, businesses and individuals as equally important drivers of building greater economic resilience and the sustainable portfolios directly target many of these essential themes and we continue to see increasing prosperity for these businesses. Markets are seldom sanguine and despite near term headwinds, the strong and increasingly powerful secular growth trends we target and the level of bad news already reflected in markets, we continue to see good medium-to-long term value within sustainable portfolios.

Powered by



**Wealth
Management**

Performance



Source: Morningstar

As at end of August 2022

1 month	-0.71%
3 month	0.70%
6 month	-1.91%
1 year	-11.54%
3 year	18.59%
	Target
Volatility	8 to 13%
Return	6 to 8%
Potential drawdown	-19%
	Yield
Assumed yield	1.35%
Dividend	80%
Savings	20%

Where targets are given, these are for indication purposes only; the actual figures achieved could be more or less than the ranges given. Source: Morningstar. Net of underlying fund costs, gross of all other charges. Source: Figaro. Fixed income considered saving income, all other asset classes (bar cash) considered dividend income.

Important information

The performance of actual portfolios linked to this Model Portfolio may differ from the performance of the Model Portfolio shown herein due to certain funds contained in the Model Portfolios not being made available for investment into actual portfolios by some investment platforms, the variation in timing of the initial investment or rebalancing differences resulting from minimum transaction size limits on the investment platform.

The Model Portfolio Service is not a financial instrument. The portfolio will consist of financial instruments, which when considered together as the Model Portfolio Service have a target market consistent with the needs of retail clients. This publication is marketing material. It is for information purposes only. The information presented herein is for illustrative purposes only and does not provide sufficient information on which to make an informed investment decision. This document is not intended and should not be construed as an offer, solicitation or recommendation to buy or sell any specific investments or participate in any investment (or other) strategy. It is recommended that potential investors should seek advice concerning the suitability of any investment from their Financial Adviser. Potential investors should be aware that past performance is not an indication of future performance and the value of investments and the income derived from them may fluctuate and they may not receive back the amount they originally invested. The tax treatment of investments depends on each investor's individual circumstances and is subject to changes in tax legislation. The Ongoing Charge Figure is variable and is for example purposes only. The information in this factsheet is for private circulation only and though it is believed to be correct it cannot be guaranteed. No representation or warranty (express or otherwise) is given as to the accuracy or completeness of the information contained in this factsheet and LGT Wealth Management UK LLP ("LGT Wealth Management") and its partners and employees accept no liability for the consequences of your acting upon the information contained herein.

LGT Wealth Management UK LLP is a Limited Liability Partnership registered in England and Wales. Registration number OC329392. LGT Wealth Management is authorised and regulated by the Financial Conduct Authority and is a member of the London Stock Exchange.

Eden Park Investment Management Limited is authorised and regulated by the Financial Conduct Authority. A Registered in England number 10953727. Registered office: The Pavilions, Eden Park, Ham Green, Bristol, BS20 0DD.