

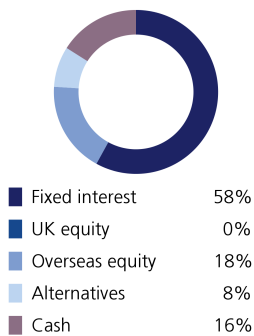
Sustainable Model Portfolio Service

In partnership with LGT Wealth Management

April 2023

EPIM Sustainable Defensive

Asset allocation



Top 10 holdings

ICS Sterling Liquidity	10.00%
Vontobel Sustainable Short Term Bond	9.40%
Trojan Ethical	7.80%
Brown Advisory Global Sustainable Total	7.00%
Rathbone Ethical Bond	6.50%
Threadneedle UK Social Bond	5.90%
Vanguard US Govt Bond Index	5.90%
L&G Global Inflation Linked	5.50%
CG Dollar	4.80%
Threadneedle European Social Bond	3.60%

Portfolio information

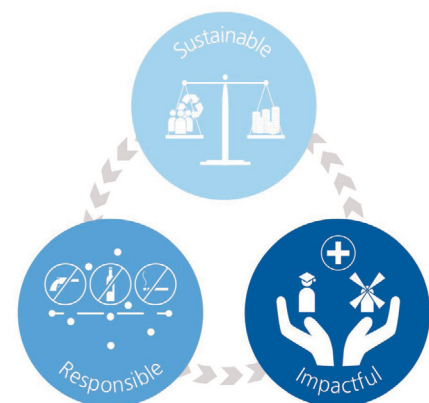
Launch date	1 June 2020
Minimum cash holding	2%
Annual management charge	0.3%
Total Cost of Investment	0.47%

Portfolio Objectives

The primary objective of this portfolio is to preserve capital. The portfolio is diversified across a range of asset classes but with a low overall allocation to funds investing in equities (expected to be no greater than 40%) and other risk assets. Target Volatility: 2%-4.75%

Sustainable philosophy

The ultimate goal of the portfolio is to support more inclusive social and economic development and more sustainable environmental and business practices, whilst generating strong and consistent investment returns. The portfolio will aim to achieve this by investing in a diversified range of funds which include themes such as renewable energy, financial inclusion, education, social housing, climate change action, sustainable waste management and renewable material production.



Monthly investment update

Markets calmed through April as fears over the solvency of the banking sector subsided. Equity markets rallied throughout most of April as contagion risk subsided and volatility came down. Only a fraction of companies have reported their Q1 2023 earnings, but despite this there have been some significant market moves, such as Microsoft and Alphabet exceeding their earnings expectations. However, the overall reports coming out for S&P 500 stocks have shown continued earnings decline, most notably in materials, health care and technology. The reduced profitability of firms, coupled with a changing macro-economic environment, may give more impetus to central banks to stop raising interest rates.

Whilst communication out from the Federal Reserve's Chair Powell et al continues to insist that inflation is too high and must be brought down to target, the market has remained skeptical. The issue herein lies with the unknown and lagged effects of monetary policy. Whilst global Composite Leading Indicators ran by the OECD point to future economic decline, trends look to at least be decelerating for several key economies, including Europe.

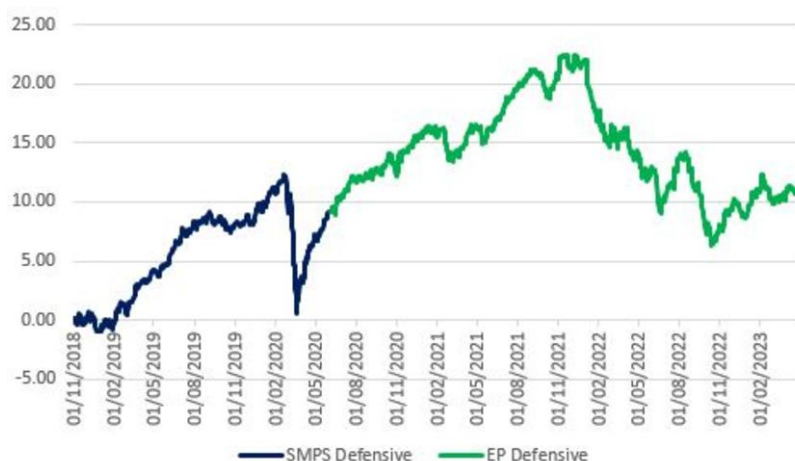
Both in March and in April our bond allocation has hedged equity volatility and we expect the correlation of these asset classes to continue to help lower volatility in our portfolios. Our Fixed Income exposure has been diversified enough to provide meaningful value on various parts of the curve as bonds continue to stabilise with interest rate expectations.

Powered by



**Wealth
Management**

Performance



Source: Morningstar

As at end of April 2023

1 month	0.09%
3 month	0.05%
6 month	2.82%
1 year	-2.81%
3 year	3.54%
	Target
Volatility	2 to 4.75%
Return	3 to 4.5%
Potential drawdown	-5.0%
	Yield
Assumed yield	1.98%
Dividend	26%
Savings	74%

Where targets are given, these are for indication purposes only; the actual figures achieved could be more or less than the ranges given. Source: Morningstar. Net of underlying fund costs, gross of all other charges. Source: Figaro. Fixed income considered saving income, all other asset classes (bar cash) considered dividend income.

Important information

The performance of actual portfolios linked to this Model Portfolio may differ from the performance of the Model Portfolio shown herein due to certain funds contained in the Model Portfolios not being made available for investment into actual portfolios by some investment platforms, the variation in timing of the initial investment or rebalancing differences resulting from minimum transaction size limits on the investment platform.

The Model Portfolio Service is not a financial instrument. The portfolio will consist of financial instruments, which when considered together as the Model Portfolio Service have a target market consistent with the needs of retail clients. This publication is marketing material. It is for information purposes only. The information presented herein is for illustrative purposes only and does not provide sufficient information on which to make an informed investment decision. This document is not intended and should not be construed as an offer, solicitation or recommendation to buy or sell any specific investments or participate in any investment (or other) strategy. It is recommended that potential investors should seek advice concerning the suitability of any investment from their Financial Adviser. Potential investors should be aware that past performance is not an indication of future performance and the value of investments and the income derived from them may fluctuate and they may not receive back the amount they originally invested. The tax treatment of investments depends on each investor's individual circumstances and is subject to changes in tax legislation. The Ongoing Charge Figure is variable and is for example purposes only. The information in this factsheet is for private circulation only and though it is believed to be correct it cannot be guaranteed. No representation or warranty (express or otherwise) is given as to the accuracy or completeness of the information contained in this factsheet and LGT Wealth Management UK LLP ("LGT Wealth Management") and its partners and employees accept no liability for the consequences of your acting upon the information contained herein.

LGT Wealth Management UK LLP is a Limited Liability Partnership registered in England and Wales. Registration number OC329392. LGT Wealth Management is authorised and regulated by the Financial Conduct Authority and is a member of the London Stock Exchange.

Eden Park Investment Management Limited is authorised and regulated by the Financial Conduct Authority. A Registered in England number 10953727. Registered office: The Pavilions, Eden Park, Ham Green, Bristol, BS20 0DD.